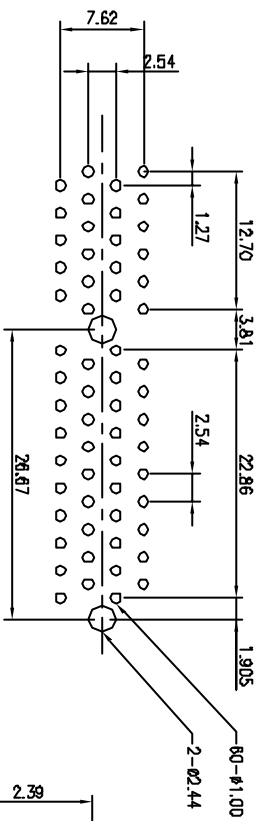
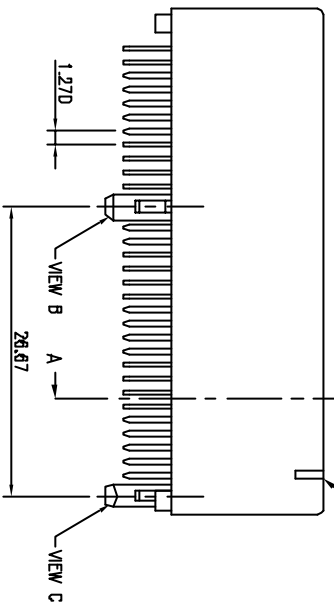
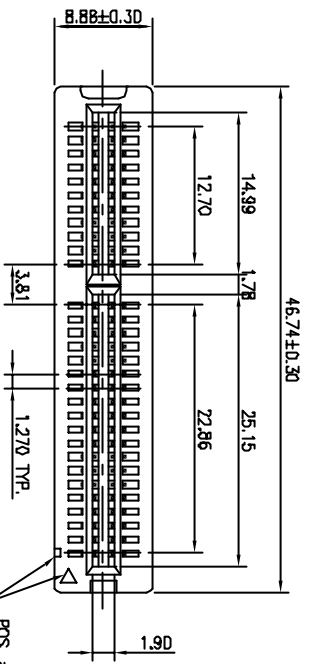
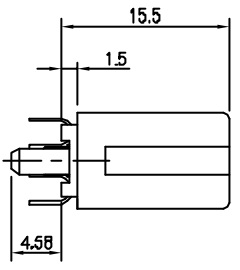


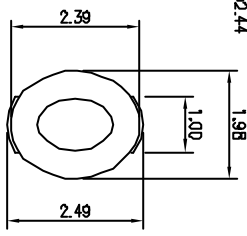
VIEW B SCALE 5 : 1



RECOMMENDED PCB LAYOUT (TOP VIEW)



VIEW C SCALE 5 : 1



VIEW D SCALE 5 : 1

**MATERIAL**  
 INSULATOR: GLASS-REINFORCED THERMOPLASTIC.  
 CONTACT: COPPER ALLOY.  
 PLATING: WATING AREA - SELECTED GOLD OVER NICKEL.  
 SOLDER AREA - Tm/LEAD OVER NICKEL.

**ELECTRICAL**  
 VOLTAGE RATING: 250 VAC RMS.  
 CURRENT RATING: 1 AMP.  
 DIELECTRICAL WITHSTANDING VOLTAGE: 500 VAC RMS 60 Hz FOR 1 MINUTE.  
 INSULATION RESISTANCE: 1000 MEGOHMS MIN AT 500 VDC.  
 CONTACT RESISTANCE: 30 MILLIOHMS MAX AT 1 AMP DC.

**MECHANICAL**  
 RETENTION FORCE: 400 GRAMS MIN PER CONTACT.  
 INSERTION FORCE: 230 GRAMS MAX PER CONTACT PER.  
 WITHDRAWAL FORCE: 15 GRAMS MIN PER CONTACT PER.

**ENVIRONMENTAL**  
 TEMPERATURE RANGE: -55°C TO +85°C.

- PART NO.**
- Series No. \_\_\_\_\_
  - P: MCA Series
  - Buy No. \_\_\_\_\_
  - E: 2 Buys
  - No. of Pns \_\_\_\_\_
  - Insulator
  - E: PBT
  - C: PCT
  - N: NY 66
  - S: PPS
  - Contact \_\_\_\_\_
  - B: Brass
  - P: Phosphor Bronze
  - Contact Thickness \_\_\_\_\_
  - 3: 0.3mm
  - Tail Length \_\_\_\_\_
  - 2: 2.54mm
  - 3: 3.00mm
  - 4: 3.56mm
- Color
  - B: Blue
  - C: Green
  - D: Yellow
  - E: Red
  - F: Purple
  - G: White
  - H: Black
  - I: Silver
  - J: Gold
  - K: Nickel
  - L: Lead Free
  - M: Tin/Lead
  - N: Tin
  - O: Lead
  - P: Post
  - Q: Post With Rib
  - R: Without Post, Only
  - S: Without Post, Only
  - T: Bold Plating
  - U: 6/F
  - V: 10u" Gold
  - W: 15u" Gold
  - X: 30u" Gold
  - Y: 81FS Pb/Ni + 15u" Gold
  - Z: Plating

**啟寶興業股份有限公司**  
**KEMAX KE MAX SHING CO., LTD.**

**TITLE:** MCA TWO BAYS 60P SLOT (CNR)  
**POST WITH RIB**

REV		ECN NO.	NAME	DATE	DRWN:	QTY:	DWG NO.	UNITS	SCALE	SHEET	REV
A		920619	Wilson	Jun 08 2003	Wilson		P06007001	MM	2 : 1	1 OF 1	B
B			Schumi								
TOLERANCE		LINEAR	ANGLES								
		X ± 0.40	X ±								
		X ± 0.30	X ±								
		XX ± 0.20	XX ±								
		XXX ± 0.10	XXX ±								
APPD:		CHKD:		MATT:							
PART NO.		P0600XXXXXX									
DWG NO.		P06007001									
CUSTMER		B									