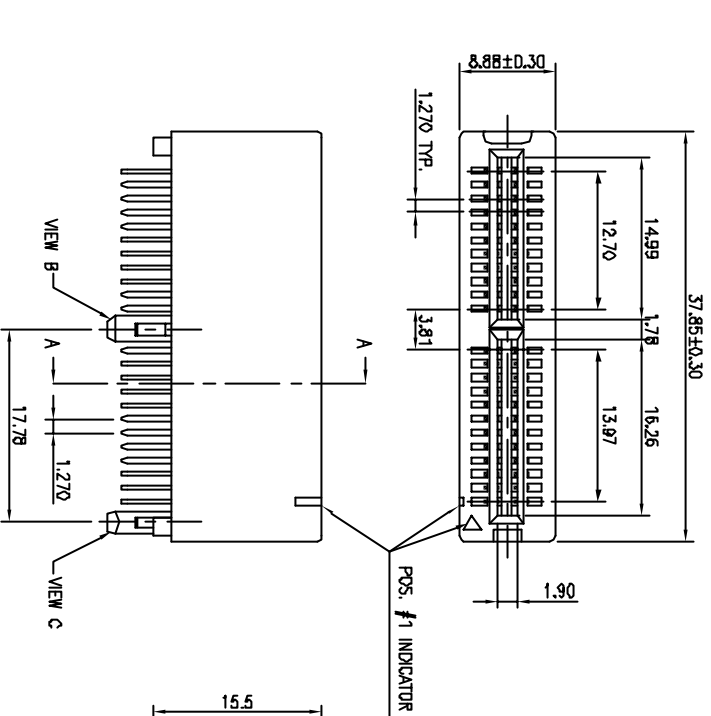
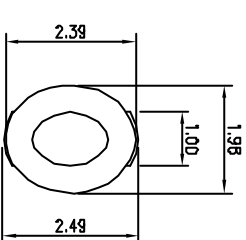


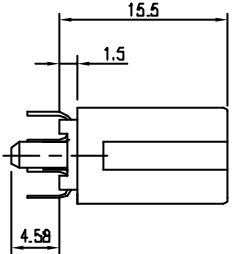
VIEW B SCALE 5 : 1



RECOMMENDED PCB LAYOUT (TOP VIEW)



VIEW C SCALE 5 : 1



MATERIAL
 INSULATOR: GLASS-REINFORCED THERMOPLASTIC.
 CONTACT: COPPER ALLOY.
 PLATING: MATING AREA - SELECTED GOLD OVER NICKEL.
 SOLDER AREA - TIN/LEAD OVER NICKEL.

ELECTRICAL
 VOLTAGE RATING: 250 VAC RMS.
 CURRENT RATING: 1 AMP.
 DIELECTRICAL WITHSTANDING VOLTAGE: 500 VAC RMS 60 Hz FOR 1 MINUTE.
 INSULATION RESISTANCE: 1000 MEGOHMS MIN AT 500 VDC.
 CONTACT RESISTANCE: 30 MILLIOHMS MAX AT 1 AMP DC.

MECHANICAL
 RETENTION FORCE: 400 GRAMS MIN PER CONTACT.
 INSERTION FORCE: 230 GRAMS MAX PER CONTACT PER WITHDRAWAL FORCE: 15 GRAMS MIN PER CONTACT PER WITHDRAWAL FORCE.

ENVIRONMENTAL
 TEMPERATURE RANGE: -55°C TO +85°C.

PART NO.

- Series No. _____
- P: MCA Series
- Buy No. _____
- E: 2 Boys
- No. Of Pins _____
- Insulator
- B: PBT
- C: PCT
- N: NY 55
- S: PPS
- Contact _____
- B: Brass
- P: Phosphor Bronze
- Contact Thickness _____
- 3: 0.3mm
- Tail Length: _____
- 2: 2.54mm
- 3: 3.00mm
- 4: 3.56mm
- D: 0.8mm
- E: 0.9mm
- F: 1.0mm
- G: 1.1mm
- H: 1.2mm
- I: 1.3mm
- J: 1.4mm
- K: 1.5mm
- L: 1.6mm
- M: 1.7mm
- N: 1.8mm
- O: 1.9mm
- P: 2.0mm
- Q: 2.1mm
- R: 2.2mm
- S: 2.3mm
- T: 2.4mm
- U: 2.5mm
- V: 2.6mm
- W: 2.7mm
- X: 2.8mm
- Y: 2.9mm
- Z: 3.0mm
- AA: 3.1mm
- AB: 3.2mm
- AC: 3.3mm
- AD: 3.4mm
- AE: 3.5mm
- AF: 3.6mm
- AG: 3.7mm
- AH: 3.8mm
- AI: 3.9mm
- AJ: 4.0mm
- AK: 4.1mm
- AL: 4.2mm
- AM: 4.3mm
- AN: 4.4mm
- AO: 4.5mm
- AP: 4.6mm
- AQ: 4.7mm
- AR: 4.8mm
- AS: 4.9mm
- AT: 5.0mm
- AU: 5.1mm
- AV: 5.2mm
- AW: 5.3mm
- AX: 5.4mm
- AY: 5.5mm
- AZ: 5.6mm
- BA: 5.7mm
- BB: 5.8mm
- BC: 5.9mm
- BD: 6.0mm
- BE: 6.1mm
- BF: 6.2mm
- BG: 6.3mm
- BH: 6.4mm
- BI: 6.5mm
- BJ: 6.6mm
- BK: 6.7mm
- BL: 6.8mm
- BM: 6.9mm
- BN: 7.0mm
- BO: 7.1mm
- BP: 7.2mm
- BQ: 7.3mm
- BR: 7.4mm
- BS: 7.5mm
- BT: 7.6mm
- BU: 7.7mm
- BV: 7.8mm
- BW: 7.9mm
- BX: 8.0mm
- BY: 8.1mm
- BZ: 8.2mm
- CA: 8.3mm
- CB: 8.4mm
- CC: 8.5mm
- CD: 8.6mm
- CE: 8.7mm
- CF: 8.8mm
- CG: 8.9mm
- CH: 9.0mm
- CI: 9.1mm
- CJ: 9.2mm
- CK: 9.3mm
- CL: 9.4mm
- CM: 9.5mm
- CN: 9.6mm
- CO: 9.7mm
- CP: 9.8mm
- CQ: 9.9mm
- CR: 10.0mm
- CS: 10.1mm
- CT: 10.2mm
- CU: 10.3mm
- CV: 10.4mm
- CW: 10.5mm
- CX: 10.6mm
- CY: 10.7mm
- CZ: 10.8mm
- DA: 10.9mm
- DB: 11.0mm
- DC: 11.1mm
- DD: 11.2mm
- DE: 11.3mm
- DF: 11.4mm
- DG: 11.5mm
- DH: 11.6mm
- DI: 11.7mm
- DJ: 11.8mm
- DK: 11.9mm
- DL: 12.0mm
- DM: 12.1mm
- DN: 12.2mm
- DO: 12.3mm
- DP: 12.4mm
- DQ: 12.5mm
- DR: 12.6mm
- DS: 12.7mm
- DT: 12.8mm
- DU: 12.9mm
- DV: 13.0mm
- DW: 13.1mm
- DX: 13.2mm
- DY: 13.3mm
- DZ: 13.4mm
- EA: 13.5mm
- EB: 13.6mm
- EC: 13.7mm
- ED: 13.8mm
- EE: 13.9mm
- EF: 14.0mm
- EG: 14.1mm
- EH: 14.2mm
- EI: 14.3mm
- EJ: 14.4mm
- EK: 14.5mm
- EL: 14.6mm
- EM: 14.7mm
- EN: 14.8mm
- EO: 14.9mm
- EP: 15.0mm
- EQ: 15.1mm
- ER: 15.2mm
- ES: 15.3mm
- ET: 15.4mm
- EU: 15.5mm
- EV: 15.6mm
- EW: 15.7mm
- EX: 15.8mm
- EY: 15.9mm
- EZ: 16.0mm
- FA: 16.1mm
- FB: 16.2mm
- FC: 16.3mm
- FD: 16.4mm
- FE: 16.5mm
- FF: 16.6mm
- FG: 16.7mm
- FH: 16.8mm
- FI: 16.9mm
- FJ: 17.0mm
- FK: 17.1mm
- FL: 17.2mm
- FM: 17.3mm
- FN: 17.4mm
- FO: 17.5mm
- FP: 17.6mm
- FQ: 17.7mm
- FR: 17.8mm
- FS: 17.9mm
- FT: 18.0mm
- FU: 18.1mm
- FV: 18.2mm
- FW: 18.3mm
- FX: 18.4mm
- FY: 18.5mm
- FZ: 18.6mm
- GA: 18.7mm
- GB: 18.8mm
- GC: 18.9mm
- GD: 19.0mm
- GE: 19.1mm
- GF: 19.2mm
- GG: 19.3mm
- GH: 19.4mm
- GI: 19.5mm
- GJ: 19.6mm
- GK: 19.7mm
- GL: 19.8mm
- GM: 19.9mm
- GN: 20.0mm
- GO: 20.1mm
- GP: 20.2mm
- GQ: 20.3mm
- GR: 20.4mm
- GS: 20.5mm
- GT: 20.6mm
- GU: 20.7mm
- GV: 20.8mm
- GW: 20.9mm
- GX: 21.0mm
- GY: 21.1mm
- GZ: 21.2mm
- HA: 21.3mm
- HB: 21.4mm
- HC: 21.5mm
- HD: 21.6mm
- HE: 21.7mm
- HF: 21.8mm
- HG: 21.9mm
- HH: 22.0mm
- HI: 22.1mm
- HJ: 22.2mm
- HK: 22.3mm
- HL: 22.4mm
- HM: 22.5mm
- HN: 22.6mm
- HO: 22.7mm
- HP: 22.8mm
- HQ: 22.9mm
- HR: 23.0mm
- HS: 23.1mm
- HT: 23.2mm
- HU: 23.3mm
- HV: 23.4mm
- HW: 23.5mm
- HX: 23.6mm
- HY: 23.7mm
- HZ: 23.8mm
- IA: 23.9mm
- IB: 24.0mm
- IC: 24.1mm
- ID: 24.2mm
- IE: 24.3mm
- IF: 24.4mm
- IG: 24.5mm
- IH: 24.6mm
- II: 24.7mm
- IJ: 24.8mm
- IK: 24.9mm
- IL: 25.0mm
- IN: 25.1mm
- IO: 25.2mm
- IP: 25.3mm
- IQ: 25.4mm
- IR: 25.5mm
- IS: 25.6mm
- IT: 25.7mm
- IU: 25.8mm
- IV: 25.9mm
- IW: 26.0mm
- IX: 26.1mm
- IY: 26.2mm
- IZ: 26.3mm
- JA: 26.4mm
- JB: 26.5mm
- JC: 26.6mm
- JD: 26.7mm
- JE: 26.8mm
- JF: 26.9mm
- JG: 27.0mm
- JH: 27.1mm
- JI: 27.2mm
- JJ: 27.3mm
- JK: 27.4mm
- JL: 27.5mm
- JM: 27.6mm
- JN: 27.7mm
- JO: 27.8mm
- JP: 27.9mm
- JQ: 28.0mm
- JR: 28.1mm
- JS: 28.2mm
- JT: 28.3mm
- JU: 28.4mm
- JV: 28.5mm
- JW: 28.6mm
- JX: 28.7mm
- JY: 28.8mm
- JZ: 28.9mm
- KA: 29.0mm
- KB: 29.1mm
- KC: 29.2mm
- KD: 29.3mm
- KE: 29.4mm
- KF: 29.5mm
- KG: 29.6mm
- KH: 29.7mm
- KI: 29.8mm
- KJ: 29.9mm
- KK: 30.0mm
- KL: 30.1mm
- KN: 30.2mm
- KO: 30.3mm
- KP: 30.4mm
- KQ: 30.5mm
- KR: 30.6mm
- KS: 30.7mm
- KT: 30.8mm
- KU: 30.9mm
- KV: 31.0mm
- KW: 31.1mm
- KX: 31.2mm
- KY: 31.3mm
- KZ: 31.4mm
- LA: 31.5mm
- LB: 31.6mm
- LC: 31.7mm
- LD: 31.8mm
- LE: 31.9mm
- LF: 32.0mm
- LG: 32.1mm
- LH: 32.2mm
- LI: 32.3mm
- LJ: 32.4mm
- LK: 32.5mm
- LL: 32.6mm
- LN: 32.7mm
- LO: 32.8mm
- LP: 32.9mm
- LQ: 33.0mm
- LR: 33.1mm
- LS: 33.2mm
- LT: 33.3mm
- LU: 33.4mm
- LV: 33.5mm
- LW: 33.6mm
- LX: 33.7mm
- LY: 33.8mm
- LZ: 33.9mm
- MA: 34.0mm
- MB: 34.1mm
- MC: 34.2mm
- MD: 34.3mm
- ME: 34.4mm
- MF: 34.5mm
- MG: 34.6mm
- MH: 34.7mm
- MI: 34.8mm
- MJ: 34.9mm
- MK: 35.0mm
- ML: 35.1mm
- MN: 35.2mm
- MO: 35.3mm
- MP: 35.4mm
- MQ: 35.5mm
- MR: 35.6mm
- MS: 35.7mm
- MT: 35.8mm
- MU: 35.9mm
- MV: 36.0mm
- MW: 36.1mm
- MX: 36.2mm
- MY: 36.3mm
- MZ: 36.4mm
- NA: 36.5mm
- NB: 36.6mm
- NC: 36.7mm
- ND: 36.8mm
- NE: 36.9mm
- NF: 37.0mm
- NG: 37.1mm
- NH: 37.2mm
- NI: 37.3mm
- NJ: 37.4mm
- NK: 37.5mm
- NL: 37.6mm
- NO: 37.7mm
- NP: 37.8mm
- NQ: 37.9mm
- NR: 38.0mm
- NS: 38.1mm
- NT: 38.2mm
- NU: 38.3mm
- NV: 38.4mm
- NW: 38.5mm
- NX: 38.6mm
- NY: 38.7mm
- NZ: 38.8mm
- OA: 38.9mm
- OB: 39.0mm
- OC: 39.1mm
- OD: 39.2mm
- OE: 39.3mm
- OF: 39.4mm
- OG: 39.5mm
- OH: 39.6mm
- OI: 39.7mm
- OJ: 39.8mm
- OK: 39.9mm
- OL: 40.0mm
- ON: 40.1mm
- OO: 40.2mm
- OP: 40.3mm
- OQ: 40.4mm
- OR: 40.5mm
- OS: 40.6mm
- OT: 40.7mm
- OU: 40.8mm
- OV: 40.9mm
- OW: 41.0mm
- OX: 41.1mm
- OY: 41.2mm
- OZ: 41.3mm
- PA: 41.4mm
- PB: 41.5mm
- PC: 41.6mm
- PD: 41.7mm
- PE: 41.8mm
- PF: 41.9mm
- PG: 42.0mm
- PH: 42.1mm
- PI: 42.2mm
- PJ: 42.3mm
- PK: 42.4mm
- PL: 42.5mm
- PN: 42.6mm
- PO: 42.7mm
- PP: 42.8mm
- PQ: 42.9mm
- PR: 43.0mm
- PS: 43.1mm
- PT: 43.2mm
- PU: 43.3mm
- PV: 43.4mm
- PW: 43.5mm
- PX: 43.6mm
- PY: 43.7mm
- PZ: 43.8mm
- QA: 43.9mm
- QB: 44.0mm
- QC: 44.1mm
- QD: 44.2mm
- QE: 44.3mm
- QF: 44.4mm
- QG: 44.5mm
- QH: 44.6mm
- QI: 44.7mm
- QJ: 44.8mm
- QK: 44.9mm
- QL: 45.0mm
- QN: 45.1mm
- QO: 45.2mm
- QP: 45.3mm
- QQ: 45.4mm
- QR: 45.5mm
- QS: 45.6mm
- QT: 45.7mm
- QU: 45.8mm
- QV: 45.9mm
- QW: 46.0mm
- QX: 46.1mm
- QY: 46.2mm
- QZ: 46.3mm
- RA: 46.4mm
- RB: 46.5mm
- RC: 46.6mm
- RD: 46.7mm
- RE: 46.8mm
- RF: 46.9mm
- RG: 47.0mm
- RH: 47.1mm
- RI: 47.2mm
- RJ: 47.3mm
- RK: 47.4mm
- RL: 47.5mm
- RN: 47.6mm
- RO: 47.7mm
- RP: 47.8mm
- RQ: 47.9mm
- RR: 48.0mm
- RS: 48.1mm
- RT: 48.2mm
- RU: 48.3mm
- RV: 48.4mm
- RW: 48.5mm
- RX: 48.6mm
- RY: 48.7mm
- RZ: 48.8mm
- SA: 48.9mm
- SB: 49.0mm
- SC: 49.1mm
- SD: 49.2mm
- SE: 49.3mm
- SF: 49.4mm
- SG: 49.5mm
- SH: 49.6mm
- SI: 49.7mm
- SJ: 49.8mm
- SK: 49.9mm
- SL: 50.0mm
- SN: 50.1mm
- SO: 50.2mm
- SP: 50.3mm
- SQ: 50.4mm
- SR: 50.5mm
- SS: 50.6mm
- ST: 50.7mm
- SU: 50.8mm
- SV: 50.9mm
- SW: 51.0mm
- SX: 51.1mm
- SY: 51.2mm
- SZ: 51.3mm
- TA: 51.4mm
- TB: 51.5mm
- TC: 51.6mm
- TD: 51.7mm
- TE: 51.8mm
- TF: 51.9mm
- TG: 52.0mm
- TH: 52.1mm
- TI: 52.2mm
- TJ: 52.3mm
- TK: 52.4mm
- TL: 52.5mm
- TN: 52.6mm
- TO: 52.7mm
- TP: 52.8mm
- TQ: 52.9mm
- TR: 53.0mm
- TS: 53.1mm
- TT: 53.2mm
- TU: 53.3mm
- TV: 53.4mm
- TW: 53.5mm
- TX: 53.6mm
- TY: 53.7mm
- TZ: 53.8mm
- UA: 53.9mm
- UB: 54.0mm
- UC: 54.1mm
- UD: 54.2mm
- UE: 54.3mm
- UF: 54.4mm
- UG: 54.5mm
- UH: 54.6mm
- UI: 54.7mm
- UJ: 54.8mm
- UK: 54.9mm
- UL: 55.0mm
- UN: 55.1mm
- UO: 55.2mm
- UP: 55.3mm
- UQ: 55.4mm
- UR: 55.5mm
- US: 55.6mm
- UT: 55.7mm
- UU: 55.8mm
- UV: 55.9mm
- UW: 56.0mm
- UX: 56.1mm
- UY: 56.2mm
- UZ: 56.3mm
- VA: 56.4mm
- VB: 56.5mm
- VC: 56.6mm
- VD: 56.7mm
- VE: 56.8mm
- VF: 56.9mm
- VG: 57.0mm
- VH: 57.1mm
- VI: 57.2mm
- VJ: 57.3mm
- VK: 57.4mm
- VL: 57.5mm
- VN: 57.6mm
- VO: 57.7mm
- VP: 57.8mm
- VQ: 57.9mm
- VR: 58.0mm
- VS: 58.1mm
- VT: 58.2mm
- VU: 58.3mm
- VV: 58.4mm
- VW: 58.5mm
- VX: 58.6mm
- VY: 58.7mm
- VZ: 58.8mm
- WA: 58.9mm
- WB: 59.0mm
- WC: 59.1mm
- WD: 59.2mm
- WE: 59.3mm
- WF: 59.4mm
- WG: 59.5mm
- WH: 59.6mm
- WI: 59.7mm
- WJ: 59.8mm
- WK: 59.9mm
- WL: 60.0mm
- WN: 60.1mm
- WO: 60.2mm
- WP: 60.3mm
- WQ: 60.4mm
- WR: 60.5mm
- WS: 60.6mm
- WT: 60.7mm
- WU: 60.8mm
- WV: 60.9mm
- WW: 61.0mm
- WX: 61.1mm
- WY: 61.2mm
- WZ: 61.3mm
- XA: 61.4mm
- XB: 61.5mm
- XC: 61.6mm
- XD: 61.7mm
- XE: 61.8mm
- XF: 61.9mm
- XG: 62.0mm
- XH: 62.1mm
- XI: 62.2mm
- XJ: 62.3mm
- XK: 62.4mm
- XL: 62.5mm
- XN: 62.6mm
- XO: 62.7mm
- XP: 62.8mm
- XQ: 62.9mm
- XR: 63.0mm
- XS: 63.1mm
- XT: 63.2mm
- XU: 63.3mm
- XV: 63.4mm
- XW: 63.5mm
- XX: 63.6mm
- XY: 63.7mm
- XZ: 63.8mm
- YA: 63.9mm
- YB: 64.0mm
- YC: 64.1mm
- YD: 64.2mm
- YE: 64.3mm
- YF: 64.4mm
- YG: 64.5mm
- YH: 64.6mm
- YI: 64.7mm
- YJ: 64.8mm
- YK: 64.9mm
- YL: 65.0mm
- YN: 65.1mm
- YO: 65.2mm
- YP: 65.3mm
- YQ: 65.4mm
- YR: 65.5mm
- YS: 65.6mm
- YT: 65.7mm
- YU: 65.8mm
- YV: 65.9mm
- YW: 66.0mm
- YX: 66.1mm
- YY: 66.2mm
- YZ: 66.3mm
- ZA: 66.4mm
- ZB: 66.5mm
- ZC: 66.6mm
- ZD: 66.7mm
- ZE: 66.8mm
- ZF: 66.9mm
- ZG: 67.0mm
- ZH: 67.1mm
- ZI: 67.2mm
- ZJ: 67.3mm
- ZK: 67.4mm
- ZL: 67.5mm
- ZN: 67.6mm
- ZO: 67.7mm
- ZP: 67.8mm
- ZQ: 67.9mm
- ZR: 68.0mm
- ZS: 68.1mm
- ZT: 68.2mm
- ZU: 68.3mm
- ZV: 68.4mm
- ZW: 68.5mm
- ZX: 68.6mm
- ZY: 68.7mm
- ZZ: 68.8mm

啟寶興業股份有限公司
KEMAX KE MAX SHING CO., LTD.

TITLE: MCA TWO BAYS 4BP SLOT (AMR)
 POST WITH RIB
 PART NO. PBQ46XX3XXXXQX
 DWG NO. P04607001

| | | | | | | | | | | | | | |
|-----|---------|---------|-------------|---------|---------|---------|-------|---------|-------|-------|-------|--------|-----|
| REV | ECN NO. | NAME | DATE | DRWN: | CHKD: | APPD: | MATL: | FINISH: | Q'TY: | UNITS | SCALE | SHEET | REV |
| A | 920619 | Willson | Jun 09 2003 | Willson | Willson | Willson | | | | MM | 2 : 1 | 1 OF 1 | B |
| B | | Schumi | | | | | | | | | | | |
| | | | | | | | | | | | | | |

1 2 3 4 5 6 7 8

E D C B A